

Android client

Manual



Tip: To protect your privacy, please modify the machine after landing factory password and please keep the user name and password.

Manual version :

versions	date	Description
V1.0	2013.5.31	/
V1.1	2013.7.15	Adds video functionality, and the client program backstage alarm notification
V1.2	2013.11.27	Adds to the account number and the admin password of single camera and RESET reset indication

1.Mobile phone requirements

Version: Android system requires Android 2.1 or above.

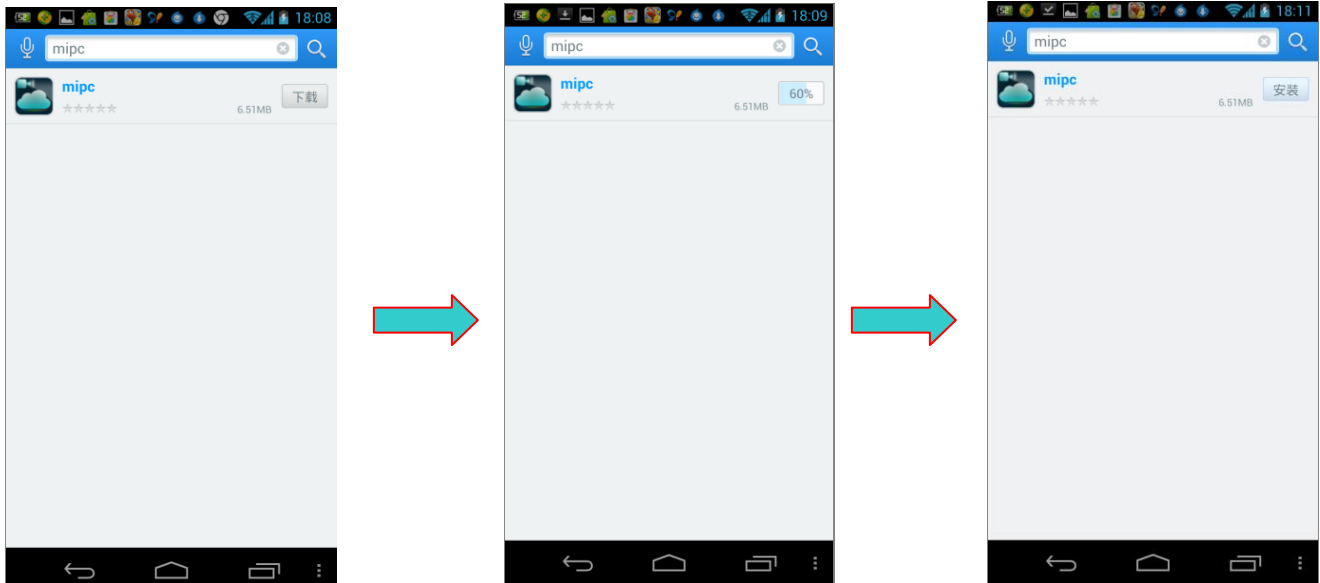
Hardware: CPU: 600MHz or above;

2.Network Camera network connection.

Users, please refer to "Quick Installation Guide by" to configure the network connection.

3.Software setup

Search “mipc” from “Play Store”、 “Android Market “ or “GoMarket”



Click on the “download” , and then “install” in to your phone



Click the “Done” , installation complete .

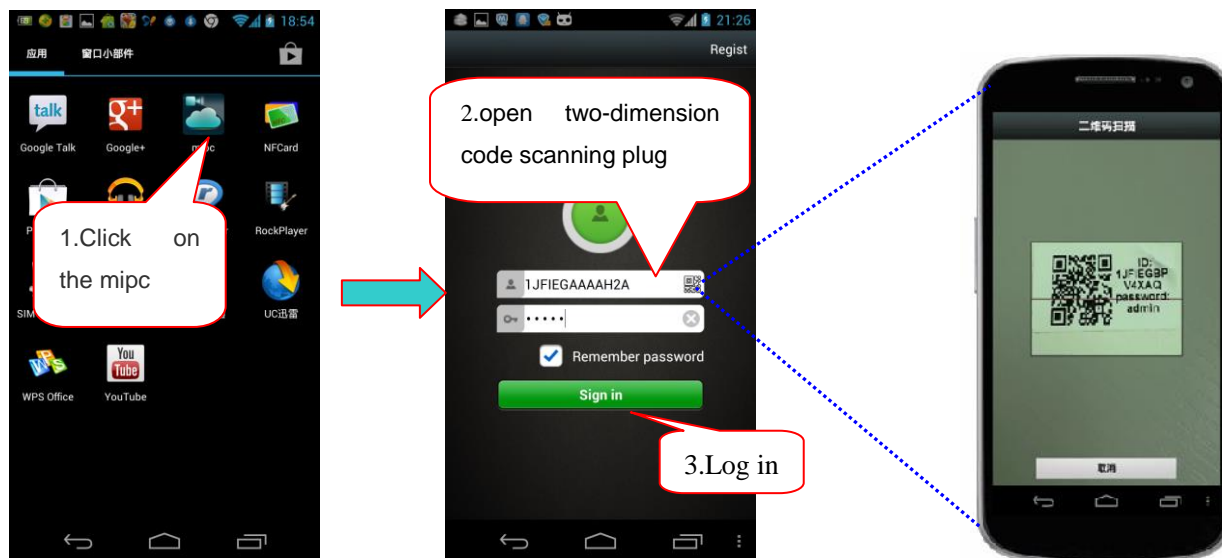
4. The client software System Overview

The Mobile APP includes: video online viewing , intercom, PTZ control, snapshot, video recording / playback, add device, device settings and exit.

4.1 client software login system:

4.1.1 scan two-dimensional code (IPCAM ID number) visit:

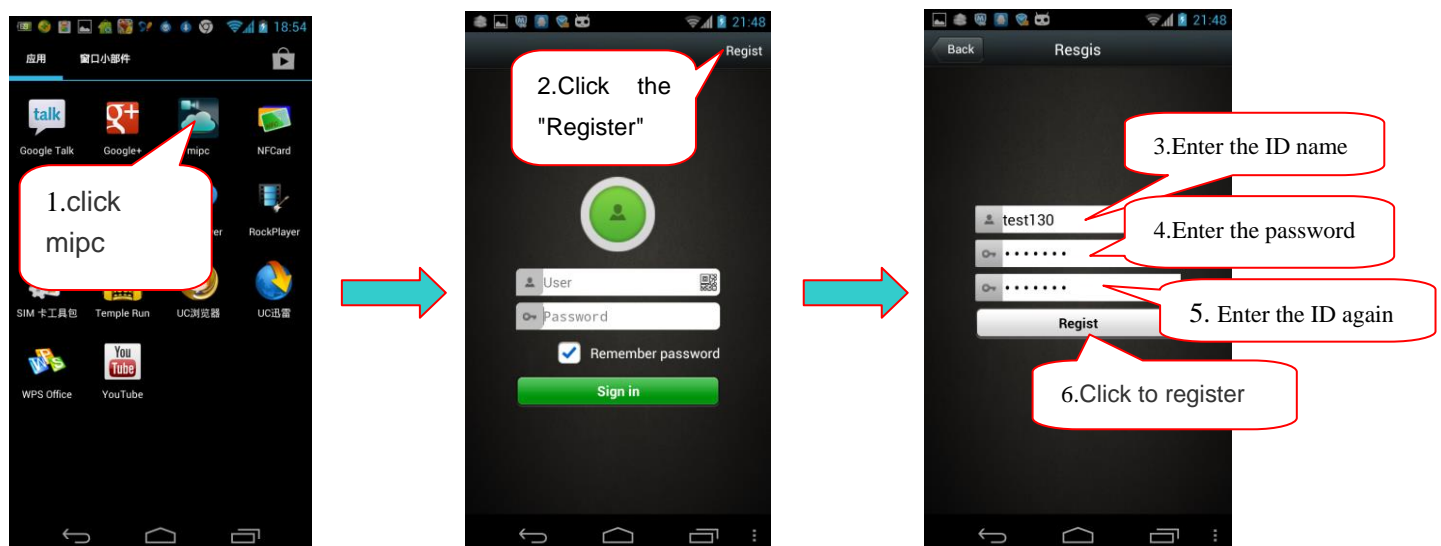
Click on mipc ,enter into login interface as follow :



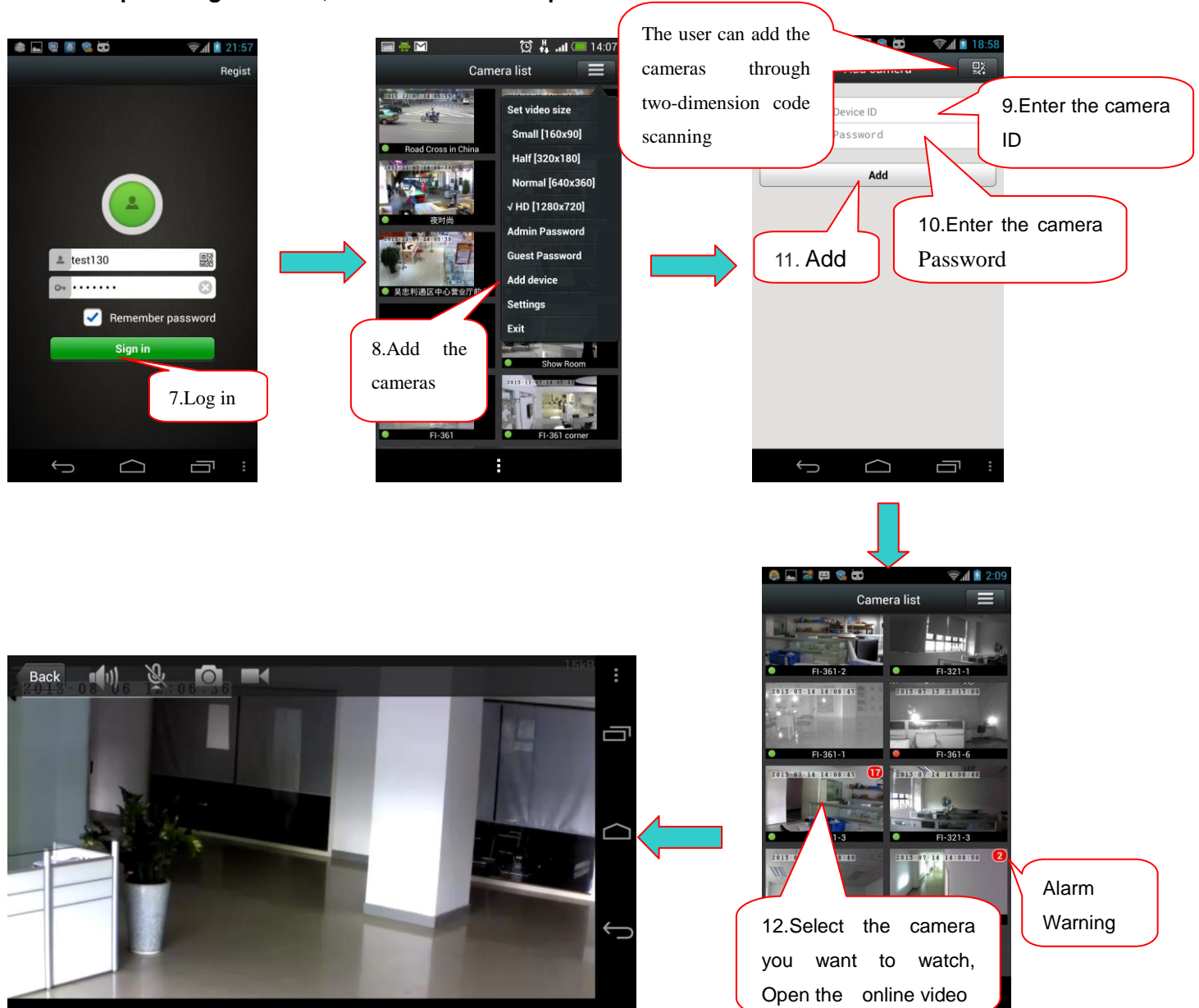
Note: If the two-dimension code are unable scanned , then need manually enter the ID number and password. (each camera is equipped with a unique ID number and password).

4.1.2 Account registration/login , add/manage devices .

Click on mipc ,enter the login interface as follow:



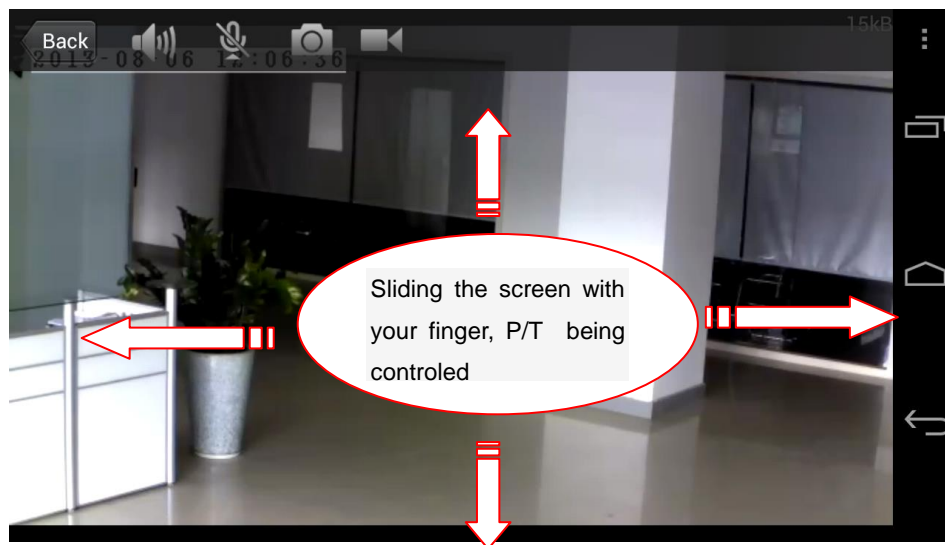
After complete registration , then follow the steps as below :




Note: the green dot in left corner indicates that the device is online, the red dot indicates that the device is offline


4.2 client software system operation:


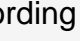
4.2.1 Main interface Menu



 : Sound monitor switch button.

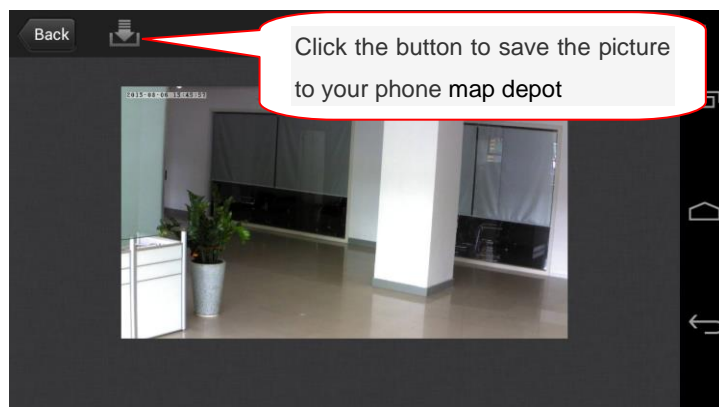
 : Audio Intercom

 : Snapshot.

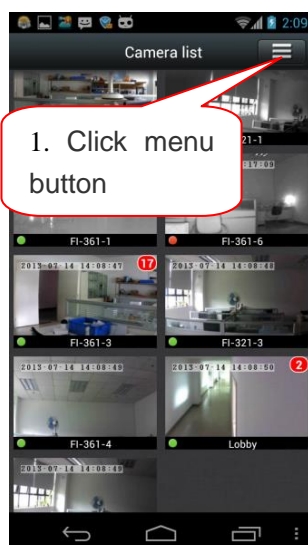
 : Manual (temporary) recording button, gray display not being recording, red display being recording, while the  flashing.

Note: If the user start manual (temporary) recording, after the user leaves the monitor screen, the video recording will

Snapshot save – Press  icon, as following steps



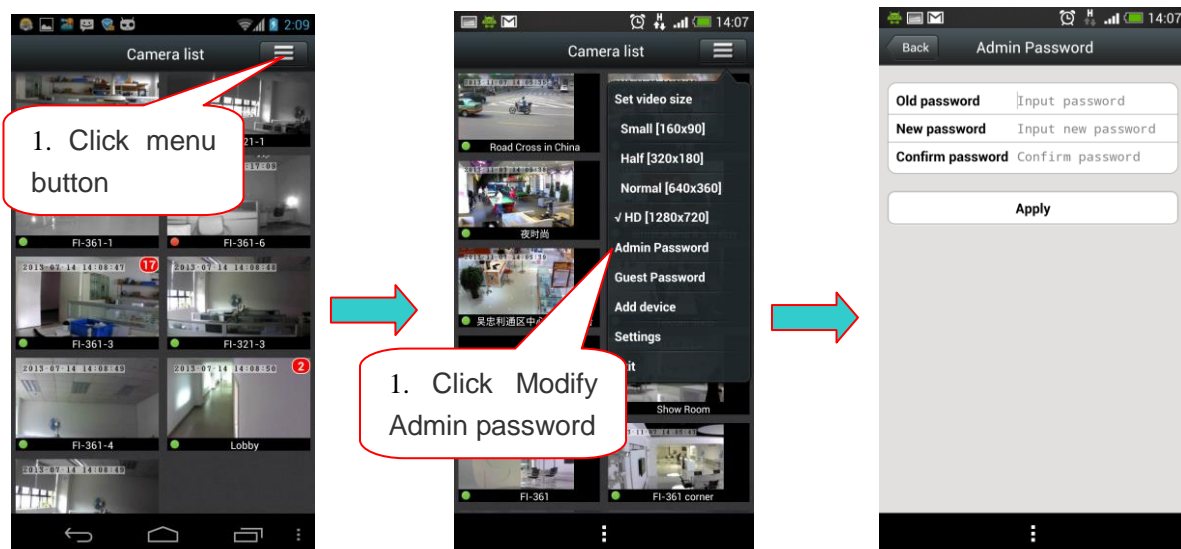
4.2.2 System settings:



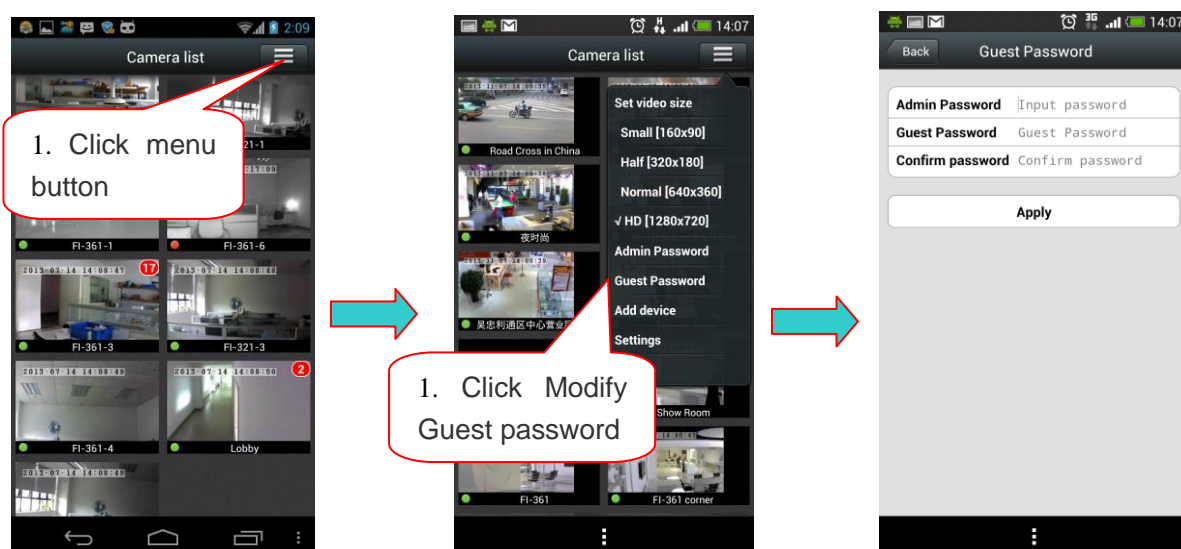
The user can select the resolution

4.2.3 Password modification

1. Modify the account admin password.



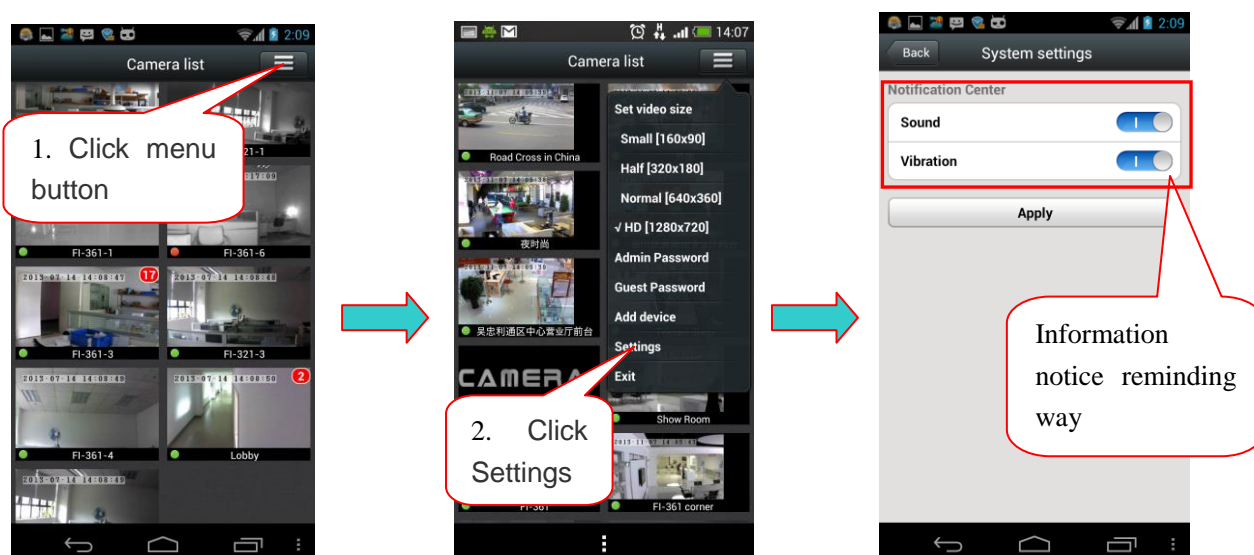
2. Modify the account guest password.



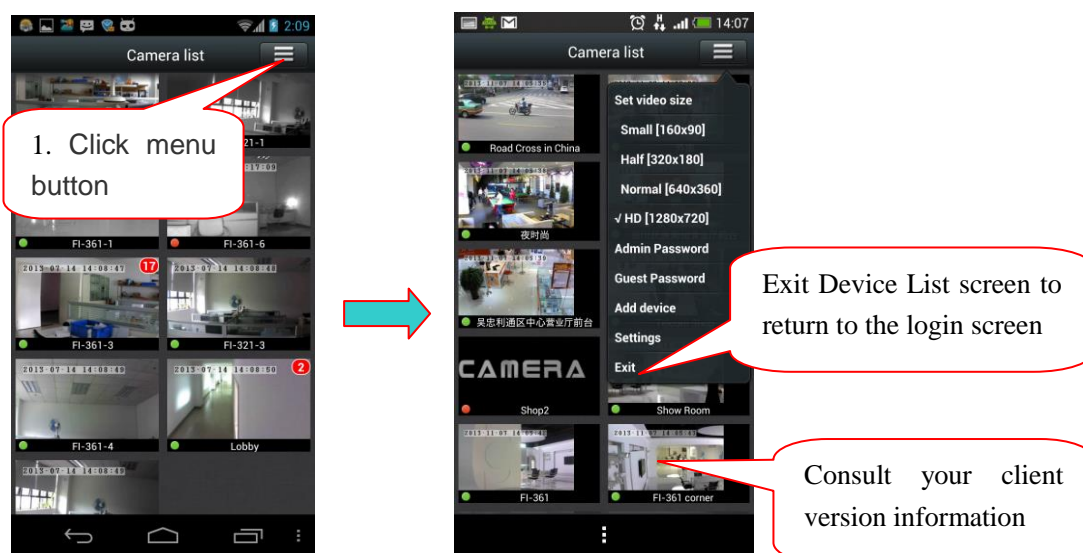
4.2.4 Register account to add camera device



4.2.5 Client Settings

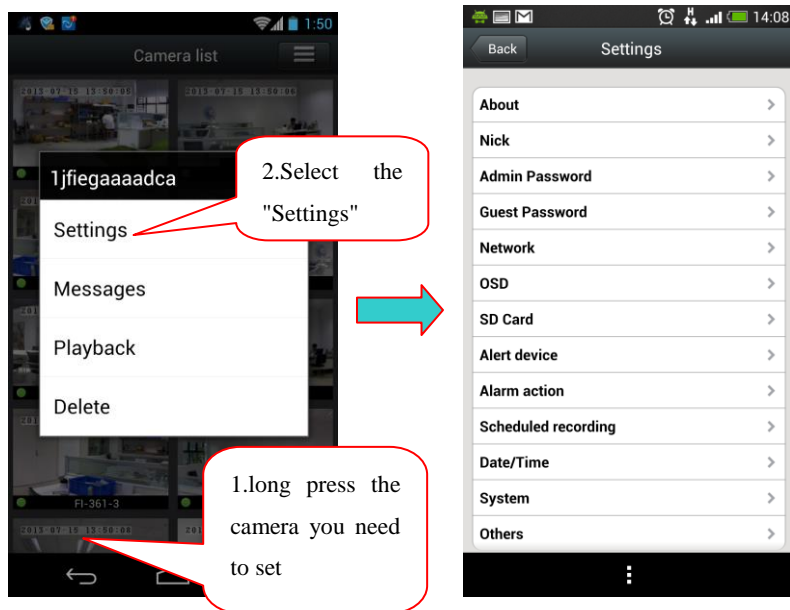


4.2.6 Exit Device List interface and access to client version

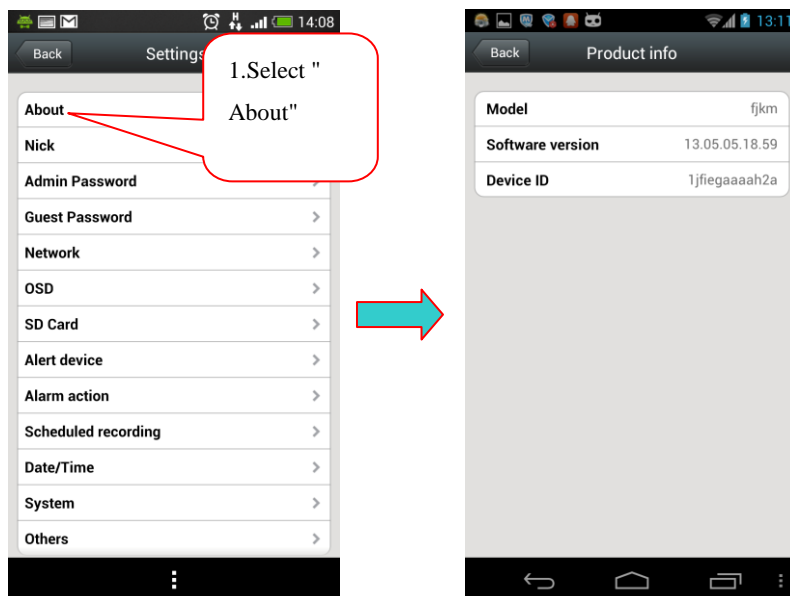


4.3 Equipment setting:

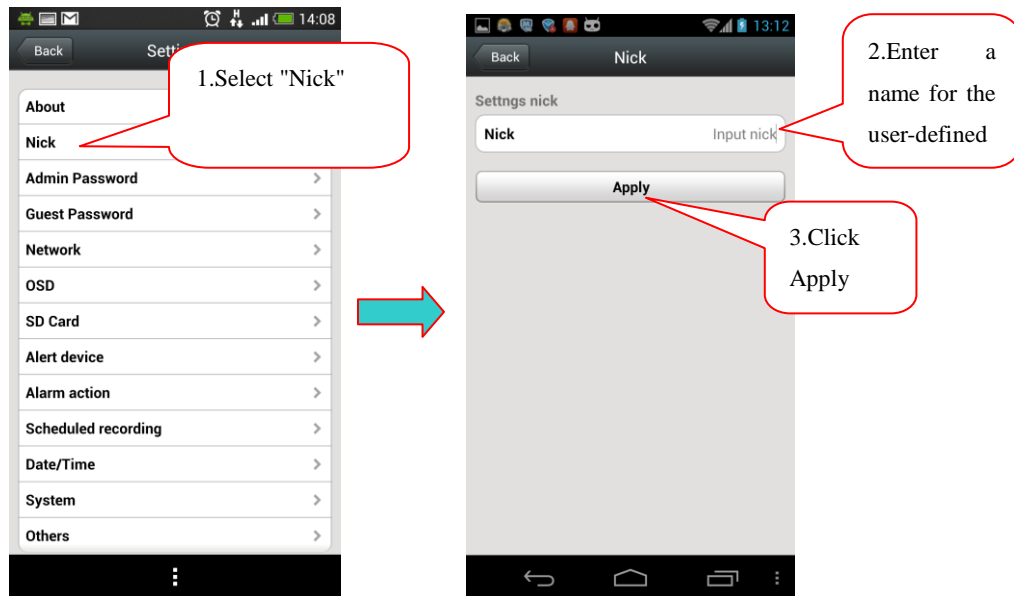
4.3.1 The camera parameter management



1>Product information:

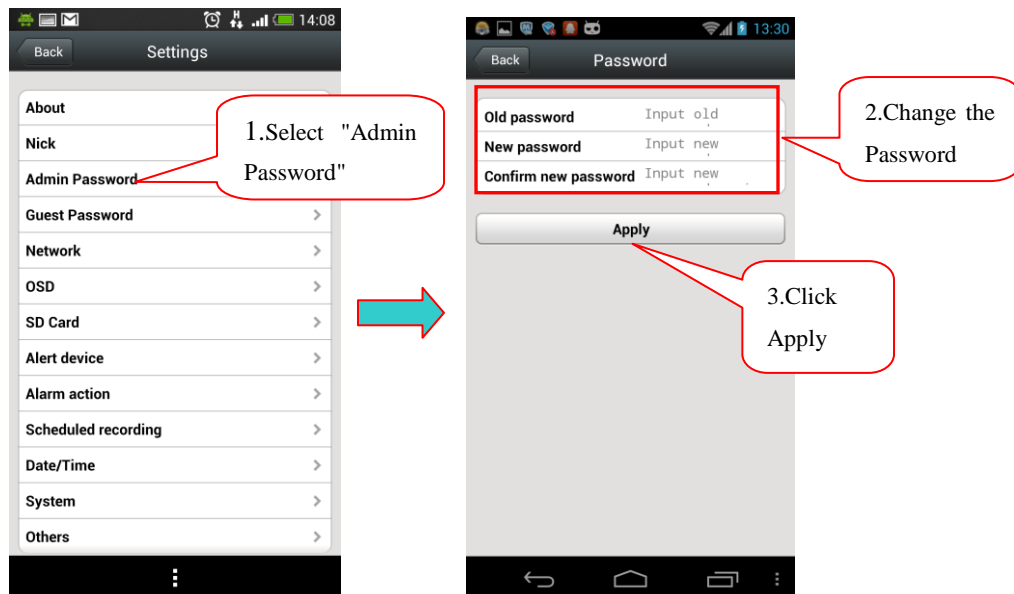


2>Named to the camera

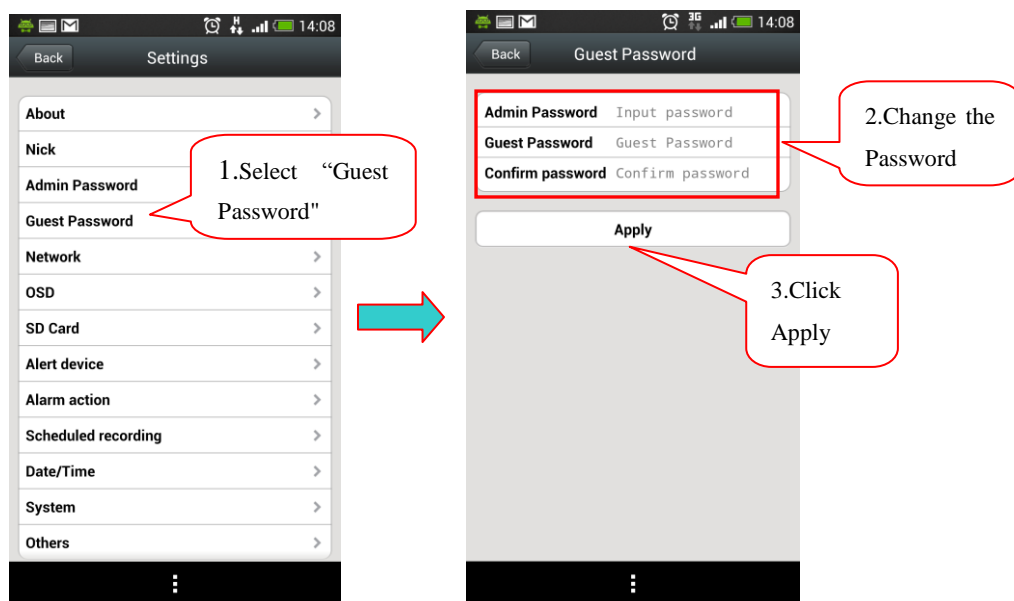


3> Password modification:

1. Modify the device admin password(the Admin password of the camera when they leave the factory is admin).

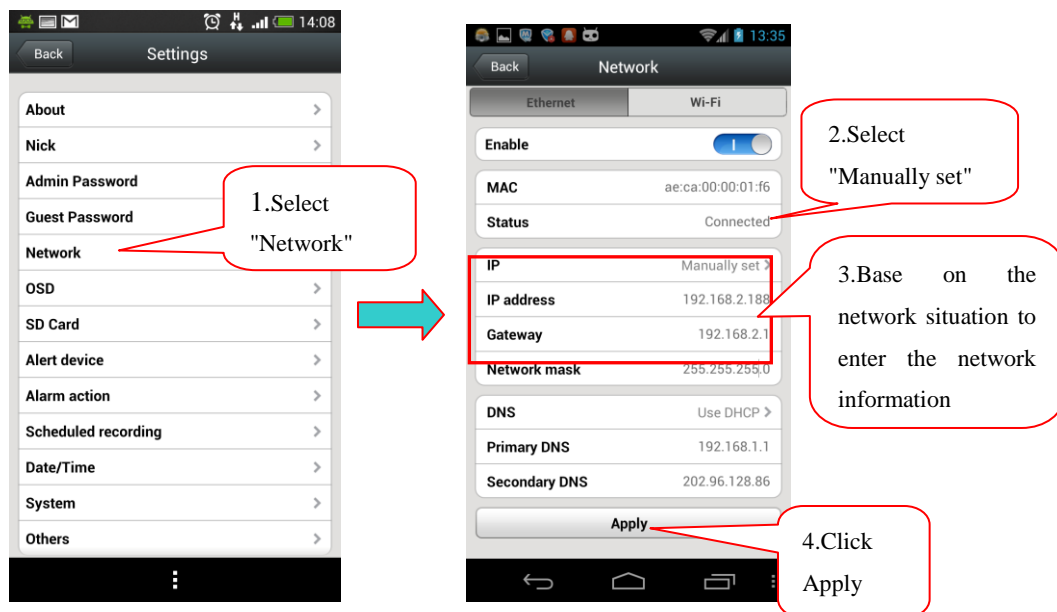


2. Modify the device guest password(the guest password of the camera when they leave the factory is admin).

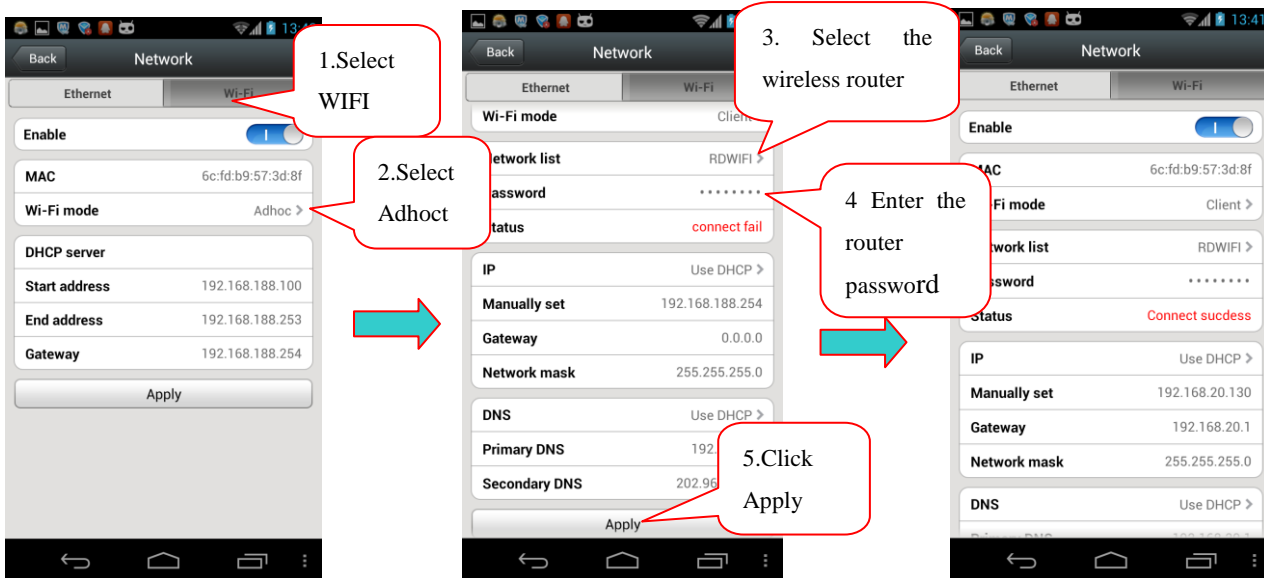


4> LAN static IP address and WLAN configuration:

⊗ LAN static IP address configuration:

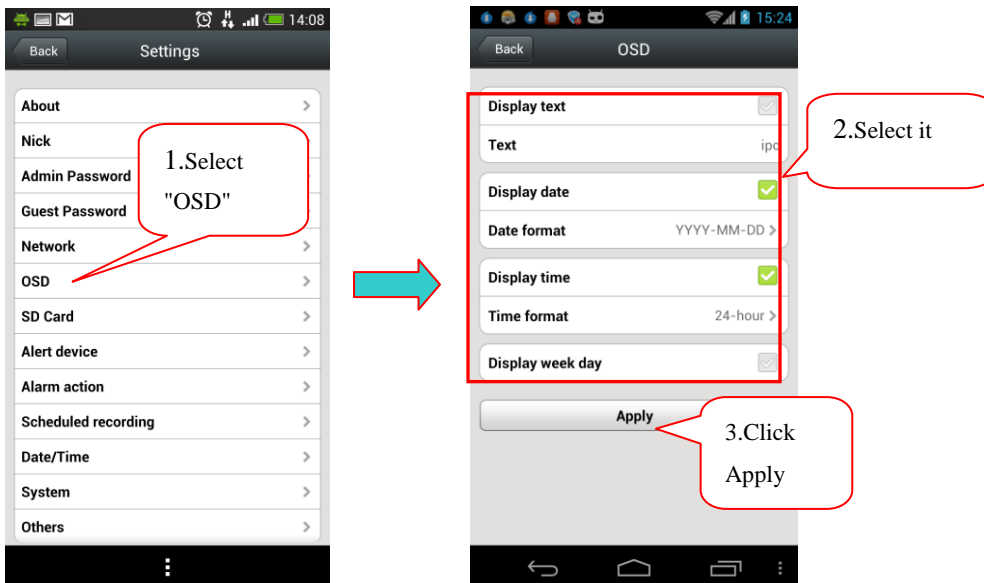


⊙WLAN configuration:

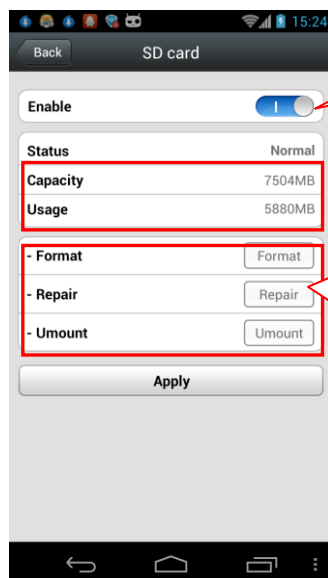
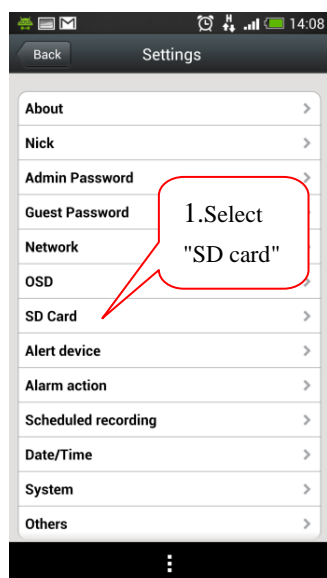


Note: Complete configure , the information on wifi page won't be updated in time , user need to leave "network" , and see "successfully connect " , then the IP add and gateway information will be provided . Meanwhile , STATE1(STA1) flashing 3 times in each 3 second in green .

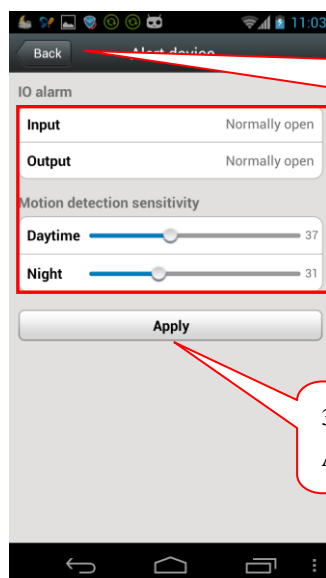
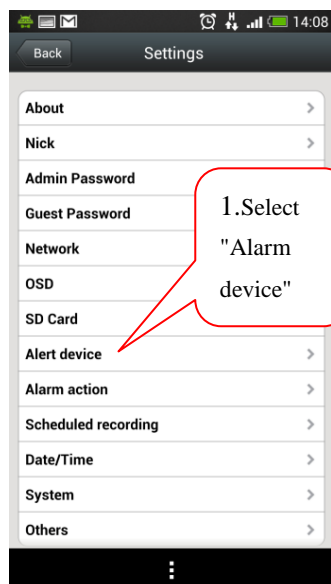
5> Setting of information in upper left-corner (OSD):



6> SD card State:



7>Camera alarm arming:

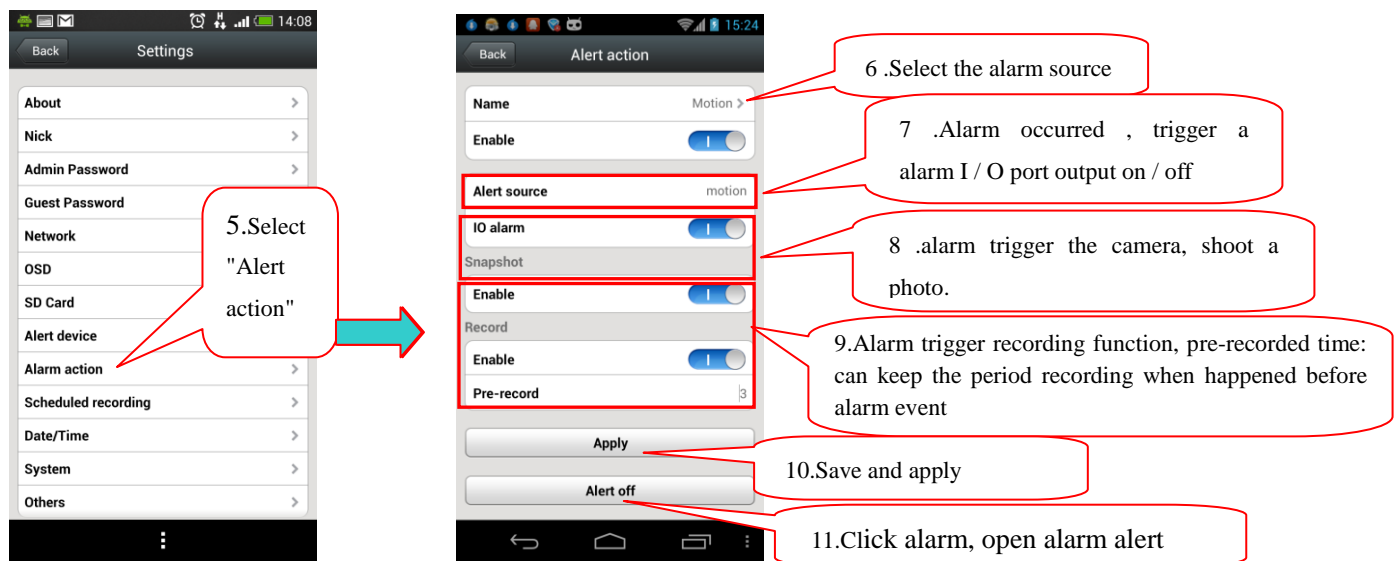


I / O Alarm input : Connect the camera alarm input to the alarm sensor (like Door contact , infrared , smoke detector etc), make sure the alarm sensor are normally-on . when alarm event occurred , alarm device switch off and trigger a camera with the arming .

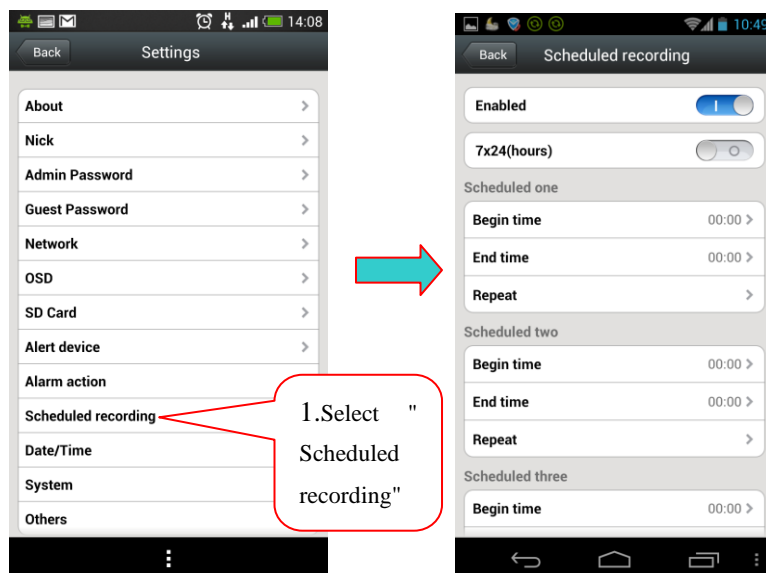
I / O Alarm output : Connect the camera alarm output to the alarm device (like loudspeaker , audible and visual alarm device etc) make sure the alarm device are normally-on . if the user have setted the alarm I / O output camera alarm output , when an event has occurred, the alarm output switch off , and trigger a external alarm device .

Sensitivity: Based on the motion detection sensitivity, the greater the value, the higher the sensitivity,

so that higher probability of false alarm , generally use the default values, user can also set up their own sensitivity.

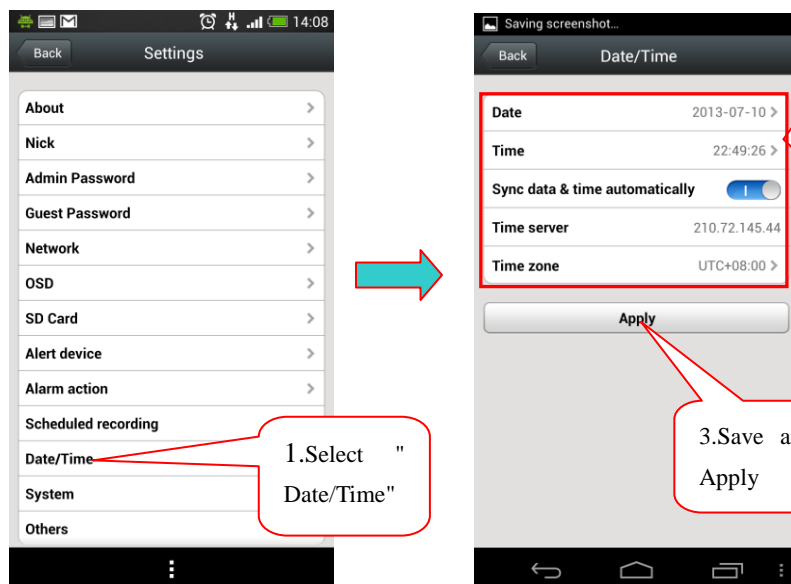


8> Scheduled recording:



NOTE: The video files stored in the storage path only provide micro SD card. Program video recording function with 30 minutes to store a video file.

9>Camera time / date settings:



2 .Time zones: the user depending on the camera location, select the corresponding local time zone.

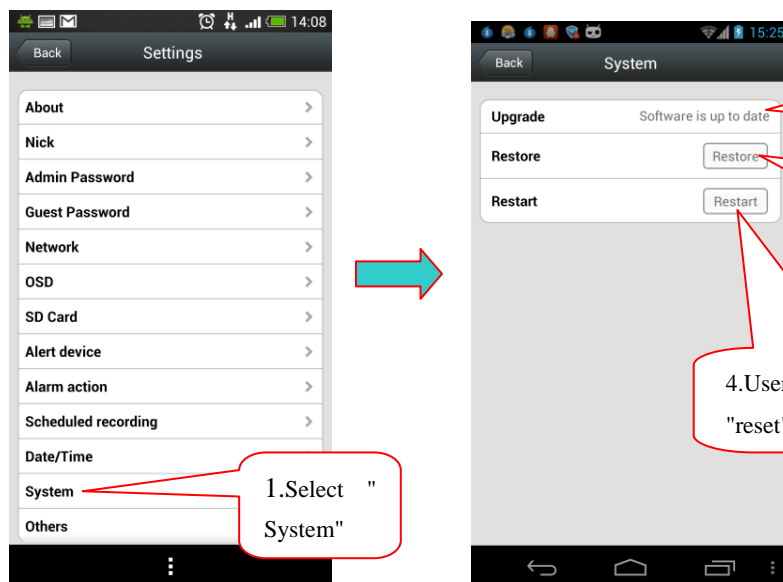
Time server: The user can search and write their local time in the server , (System default is China).

Auto-Sync with a time server: turned on the camera, it will automatically synchronize the time on the server address

Date: turn off the Auto-Sync ,user can change the camera date on display .

Time: turn off the Auto-Sync ,user can change the camera time on display .

10>Camera firmware upgrade, Restore Factory Defaults, reboot:



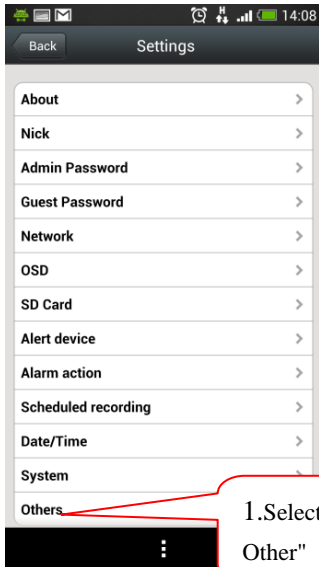
2.If there is latest firmware, the user can click the Upgrade

3 User can click the "restore" to complete restore factory default , the same operation as long Press the camera RESET button for five seconds.

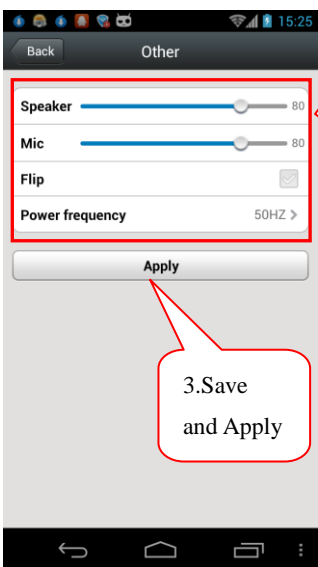
4.Users may clicking the "reset" to restart the camera

Note: when press the RESET button about 5 seconds, the STATE2 lights will be kept flashing, the successful reduction.

11>Set the camera's audio, image mirror, power frequency.




1. Select "Other"



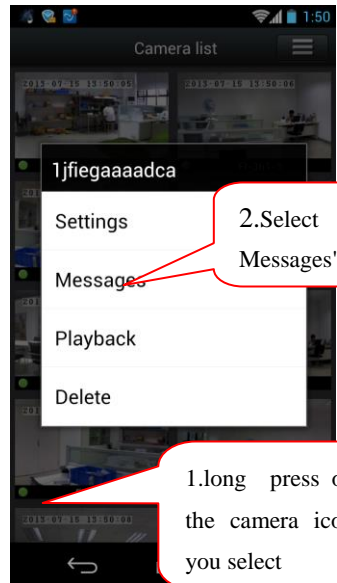
2. **Speaker:** the user can adjust the speaker volume
Microphone: the user can adjust the microphone volume
Mirror Image : Suitable for camera down to installed, checked.
Power frequency: 50HZ/60HZ options, base

3. Save and Apply

4.4 Camera device information:

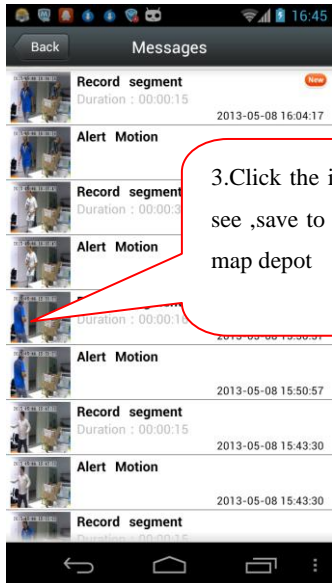


The unread alarm information



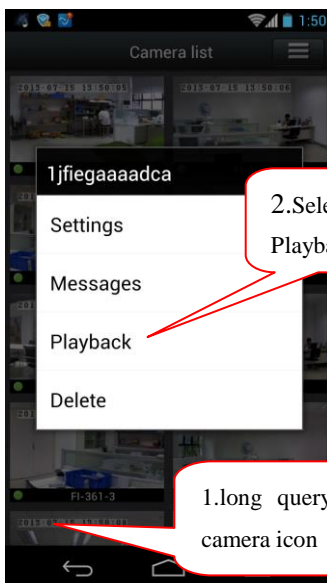
1. long press on the camera icon you select

2. Select "Messages"




3. Click the image and see ,save to the phone map depot

4.5 Camera video recording and playback:



1. long query by camera icon

2. Select "Playback"



3. User can select and playback the video (7 days in 24 hours recording, the system will package a file in the Micro SD (T-FLASH) Carry every 30 minutes.

4.6 Remove the camera from the Device Manager interface:

